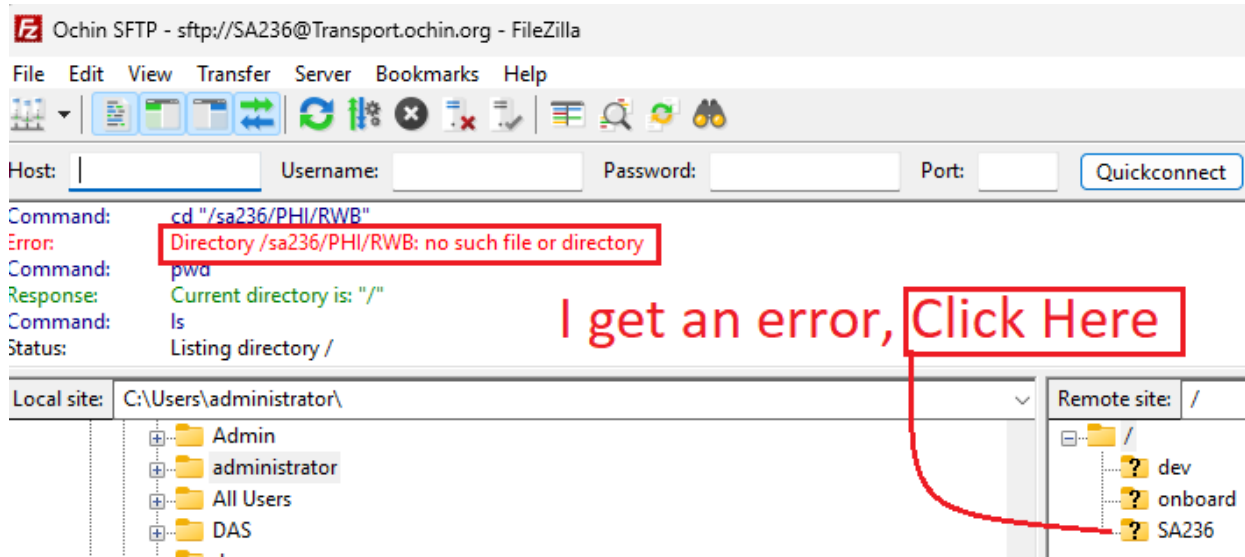


FileZilla

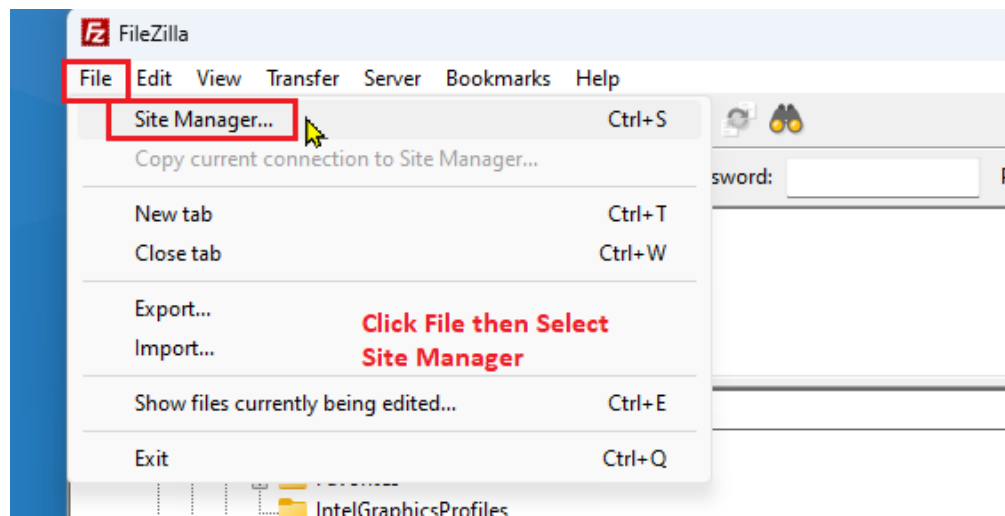
You must have access to the **RWB** network folder for this to work.

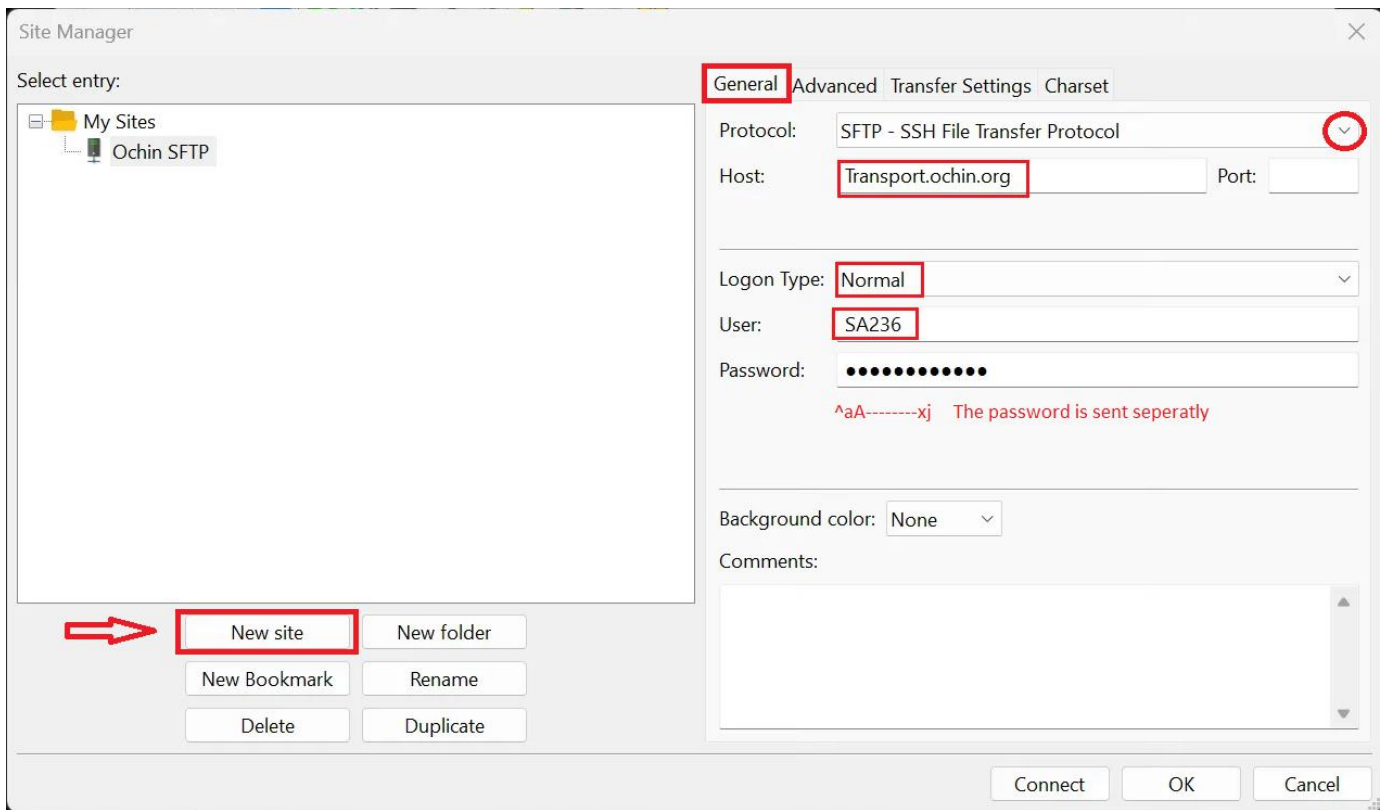
If you get an error about Directory /sa236



The error goes away, and you are finished.

How to Set Up a New Connection with FileZilla Manually



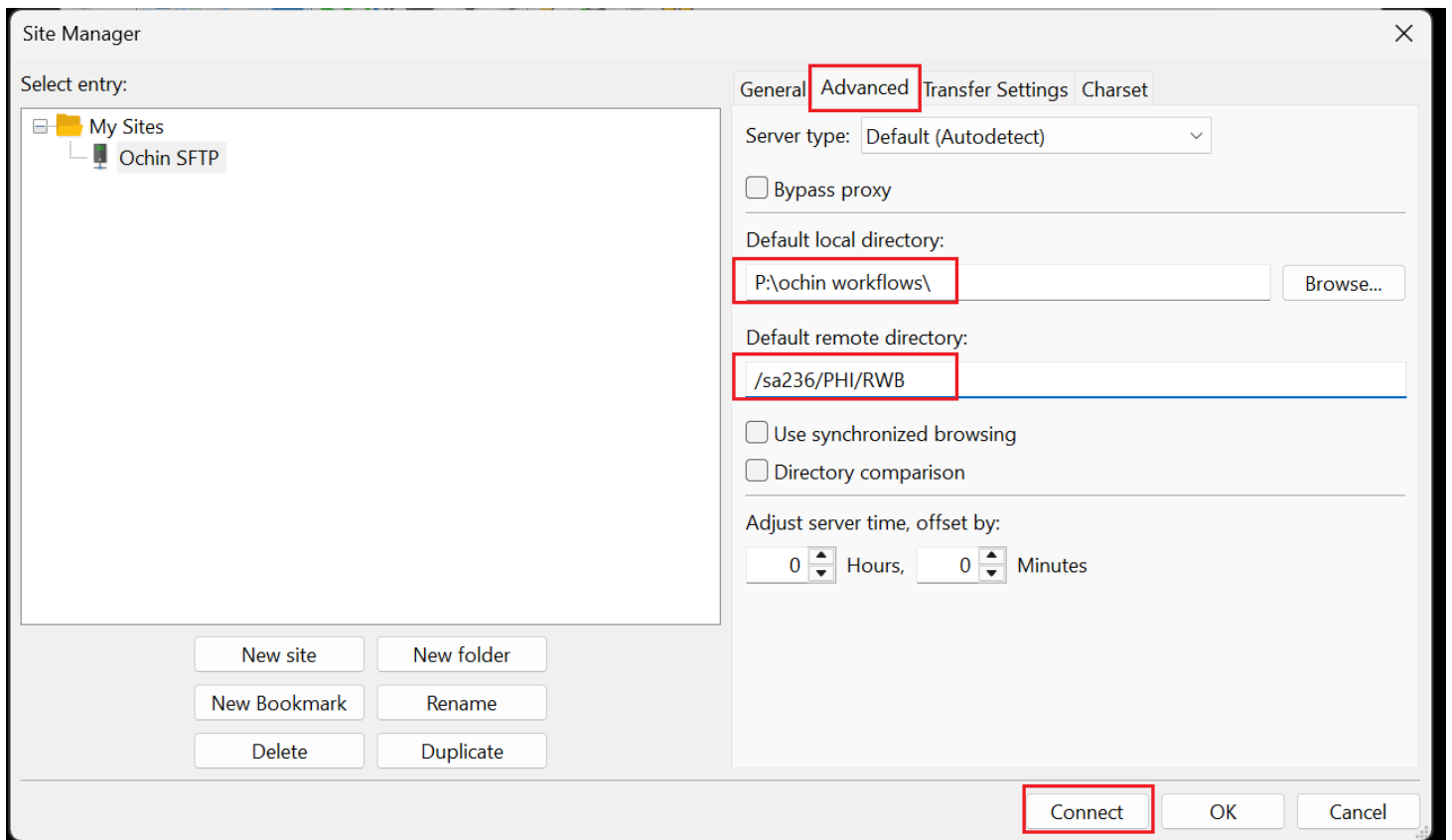


Use the pull-down menu to select the Protocol. Copy and paste from here:

Host: Transport.ochin.org

Port: Leave Blank

Username: SA236



Default Path: P:\ochin workflows\

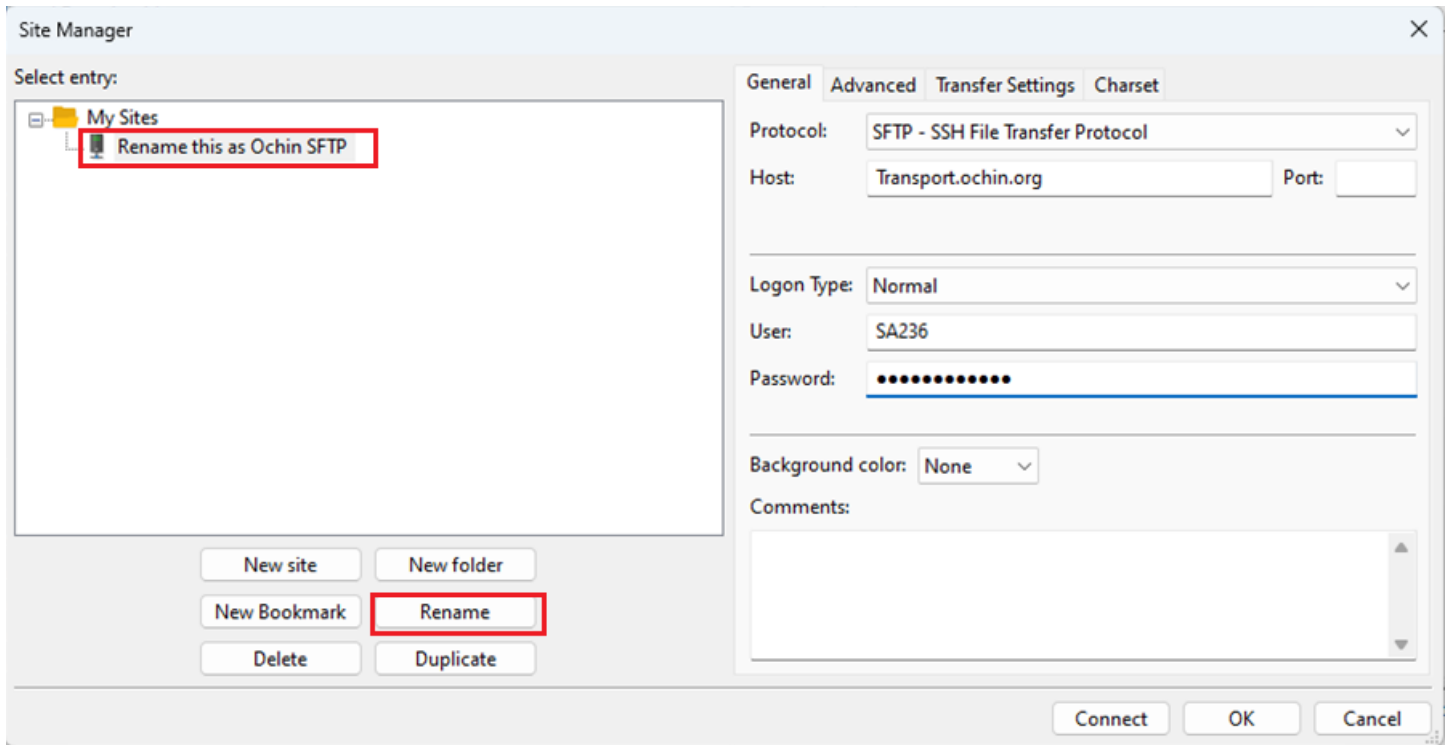
This setting determines where downloaded files are saved.

You may wish to change this location to your "**Downloads**" folder.

Default remote directory: /sa236/PHI/RWB

- After pressing Connect, a 30–60 second pause will occur while it connects. Please wait.
- If you receive a connection error, make sure there are no spaces after the password.
- Check that all the information has been entered exactly as listed above.
- If the connection still fails, create a DAS ticket.

Need to **Rename** Your Site Name:
Highlight the title you wish to change and select 'Rename'.



[Download FileZilla](#)

Use this link to download.

If you Google for the program to download, FileZilla, you will get unwanted ad software.

